

# GS3 2630



MIDWEST  
MACHINERY CO



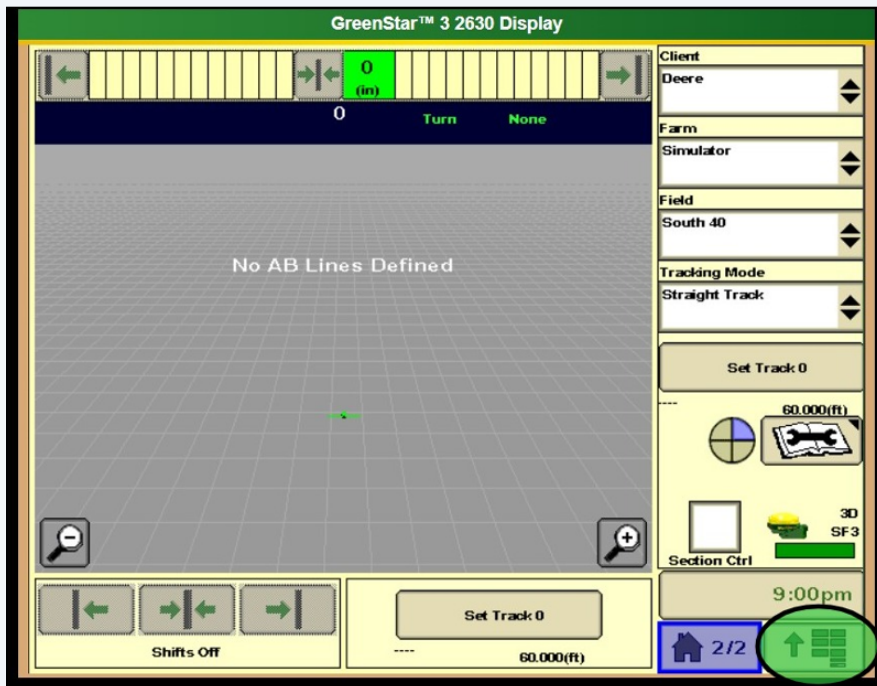
## DOCUMENTATION SETUP

How to setup a GS3 2630 to accurately document.

# GS3 2630 - Documentation Setup

This How-To Guide shows how to setup a GS3 2630 to accurately document or "paint." This guide is based on setting up a planting operation with a SeedStar2 planter, but gives the basics for any type of operation being documented with a GS3 2630. This How-To Guide is meant to go along with the GS3 2630 Documentation Setup Video.

- 1 Select the Main Menu on the GS3 2630

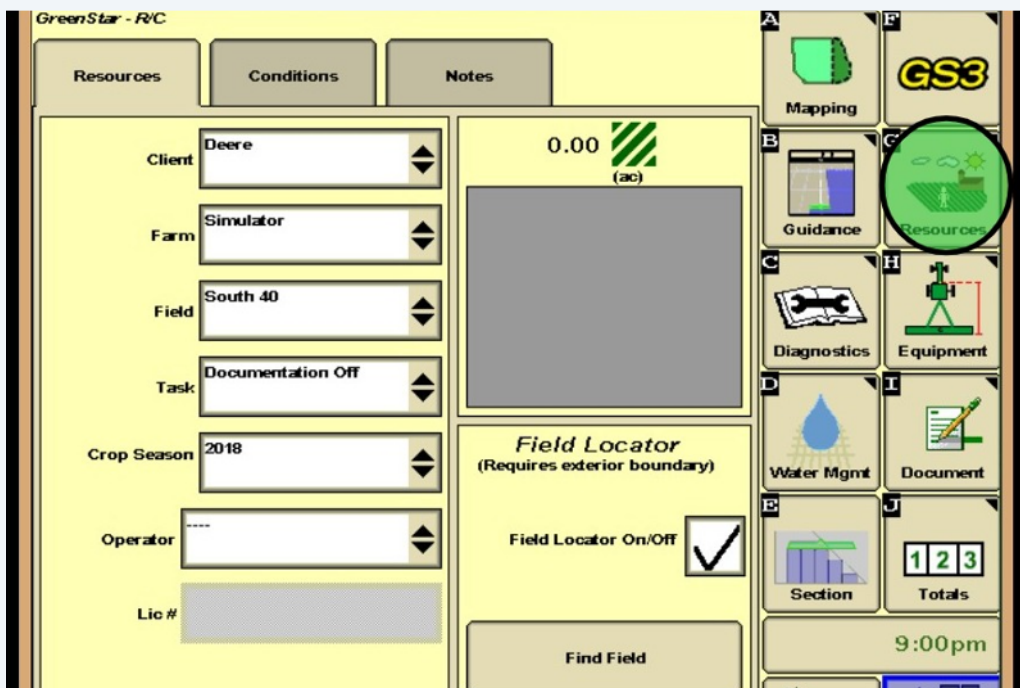


2 Select "GS3 GreenStar"



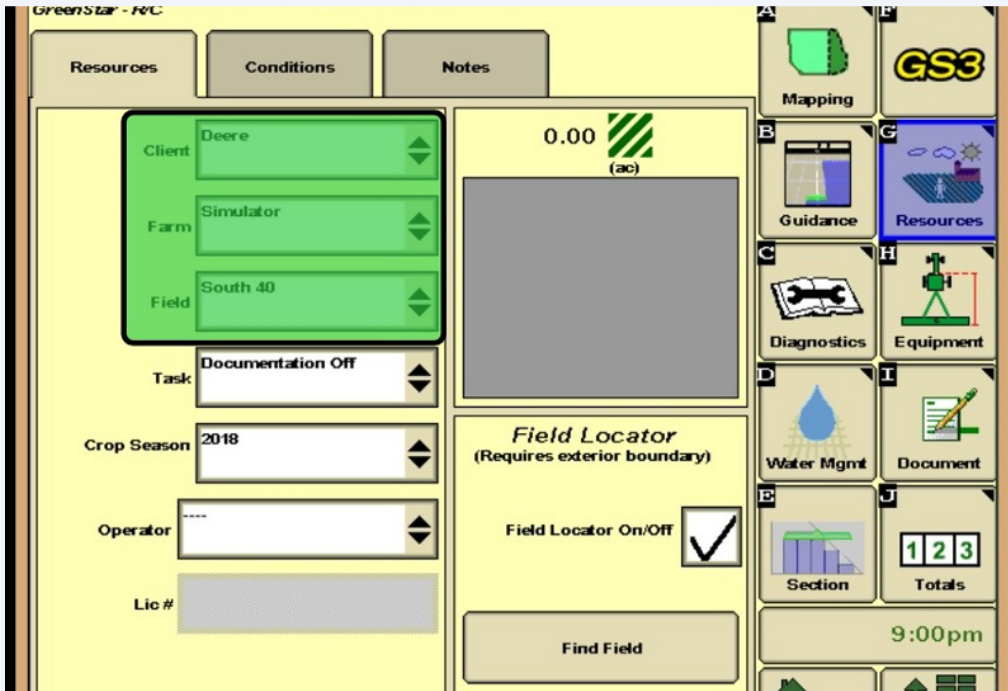
## Resources

3 Select "Resources" tab on right hand side of the screen



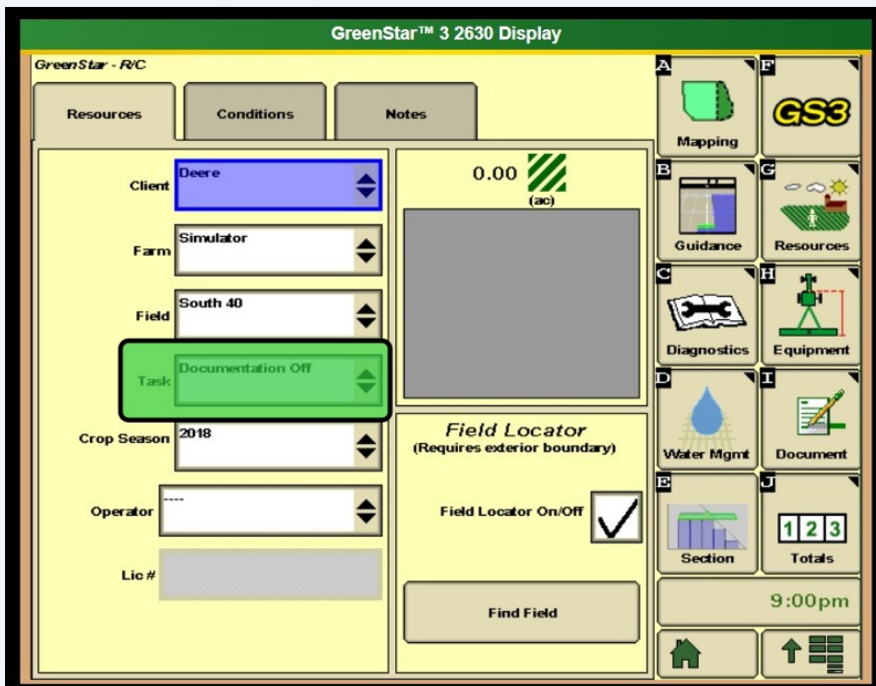
4

Verify that Operator has correct Client, Farm, and Field in their respective drop-down menus

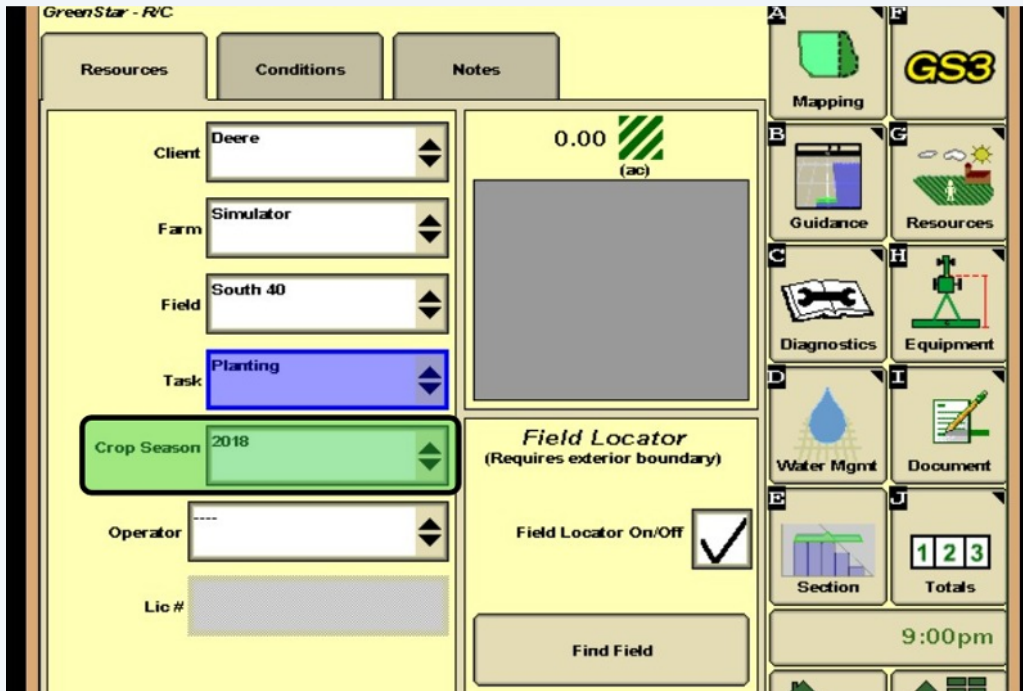



5

Verify the Task is set to the task the Operator is performing. Ie. Planting/Harvest/Post-Emerge Application



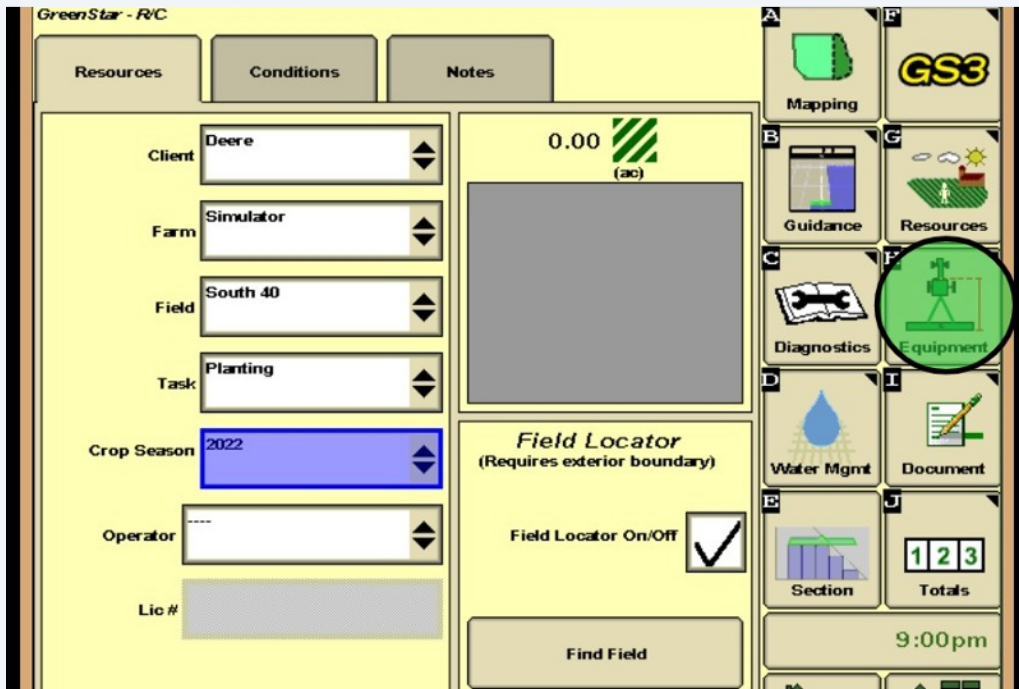
6 Verify Operator has the correct Crop Season entered



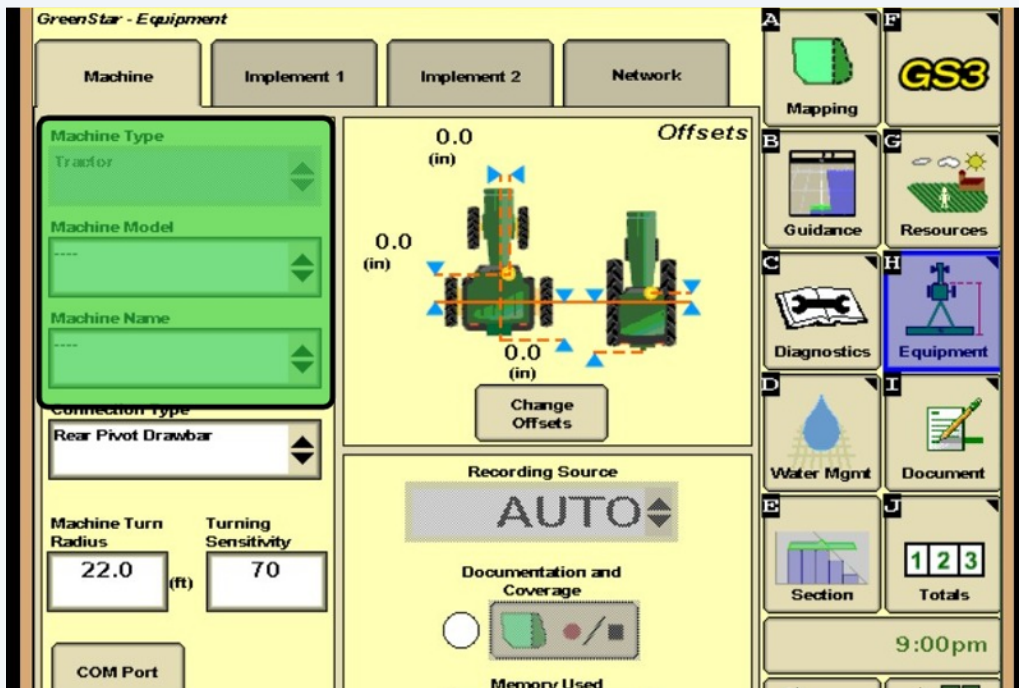
 Tip! Operator can be left blank and is only for more accurate reporting. Client/Farm/Field/Task must all be filled out for GS3 2630 to "paint"

## Equipment

7 Select "Equipment" tab on right hand side of the screen



8 Verify correct Machine Model and Machine Name are selected in their respective drop-down menus

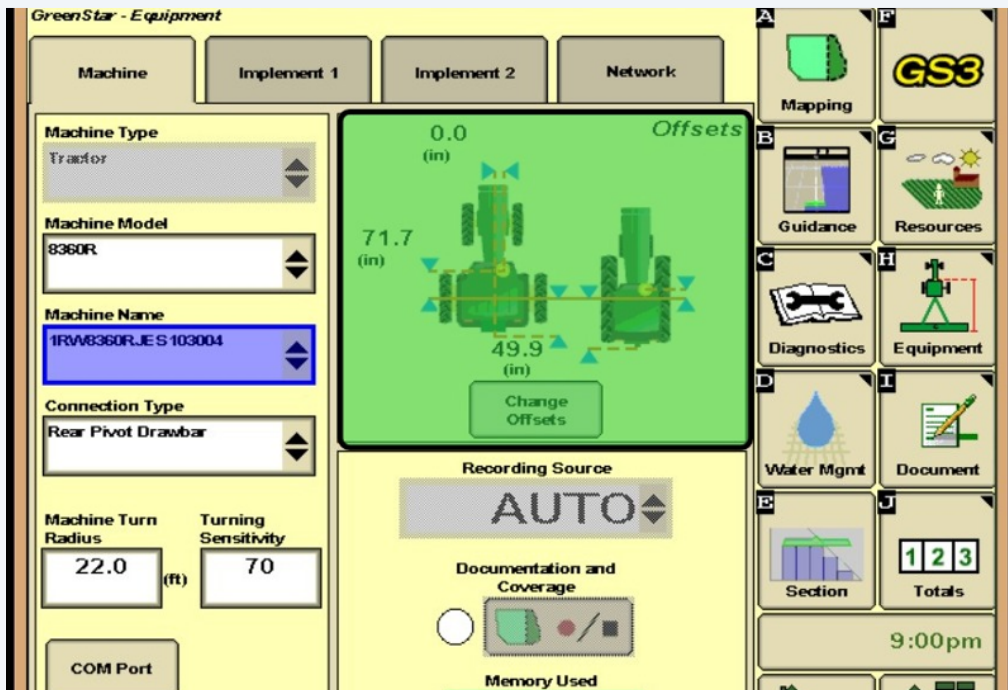




Tip! If Operator generally loads Setup Files to their displays each season and their machine model or name is not available, they may need to load a setup file containing the correct equipment

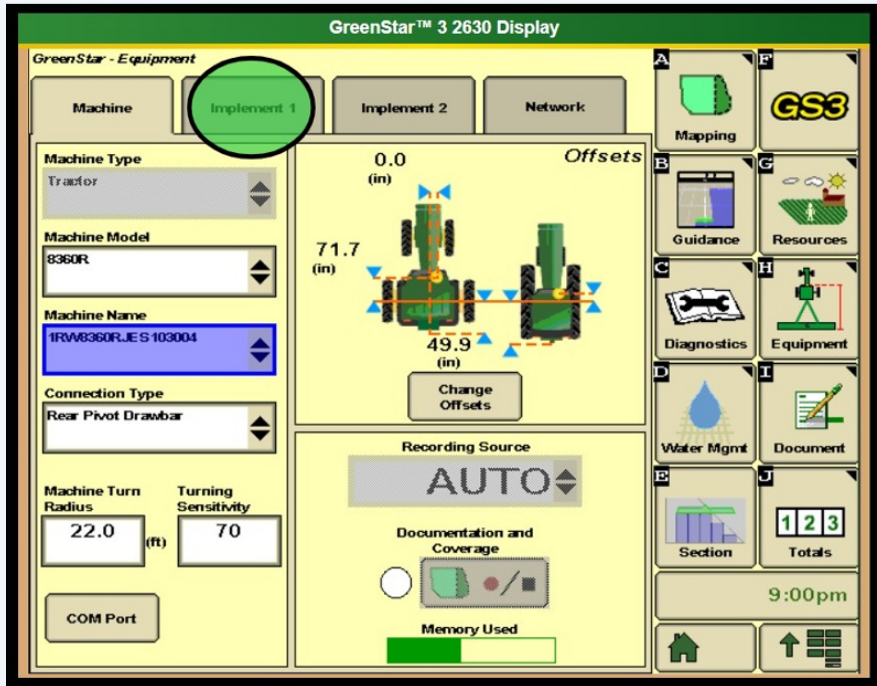
9

Verify Machine Measurements are correct. These are crucial to Section Control performance

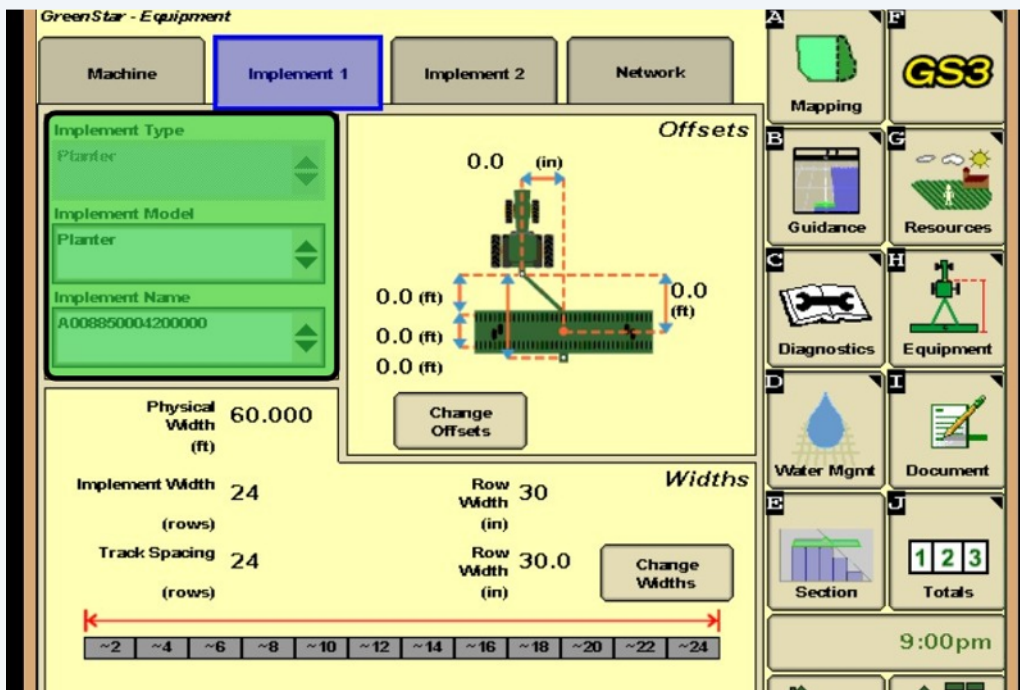


Tip! Also verify that the "Recording Source" reads "Auto" and is greyed out. This means that the display recognizes the implement that is connected.

- 10 Click "Implement 1" Tab at top of the screen

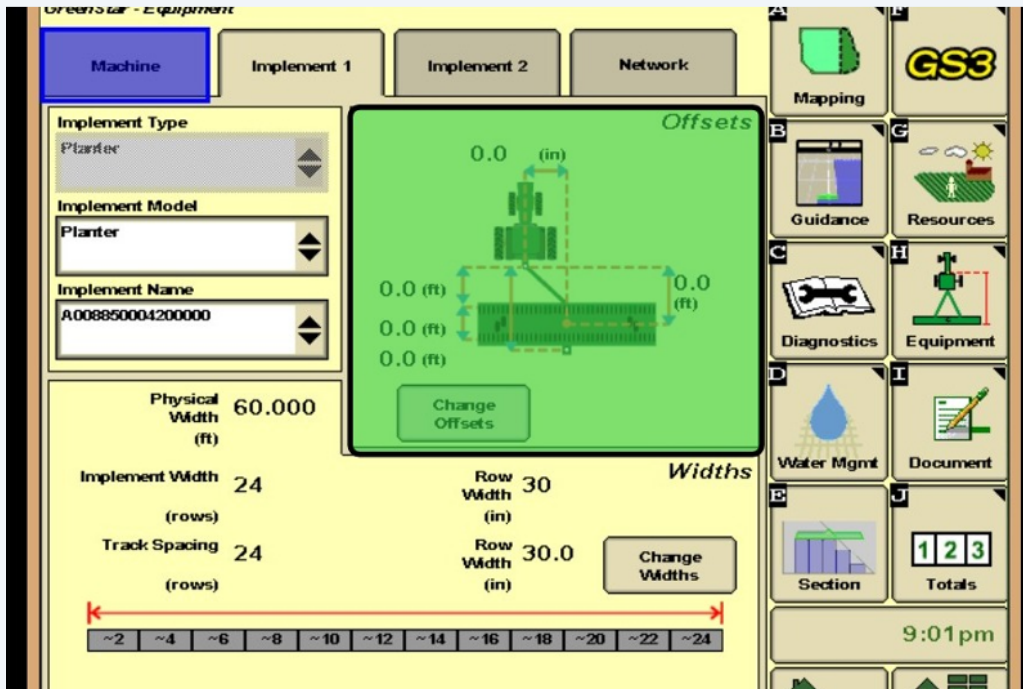


- 11 Verify Correct Implement Model and Implement Name are selected in their respective drop-down menus



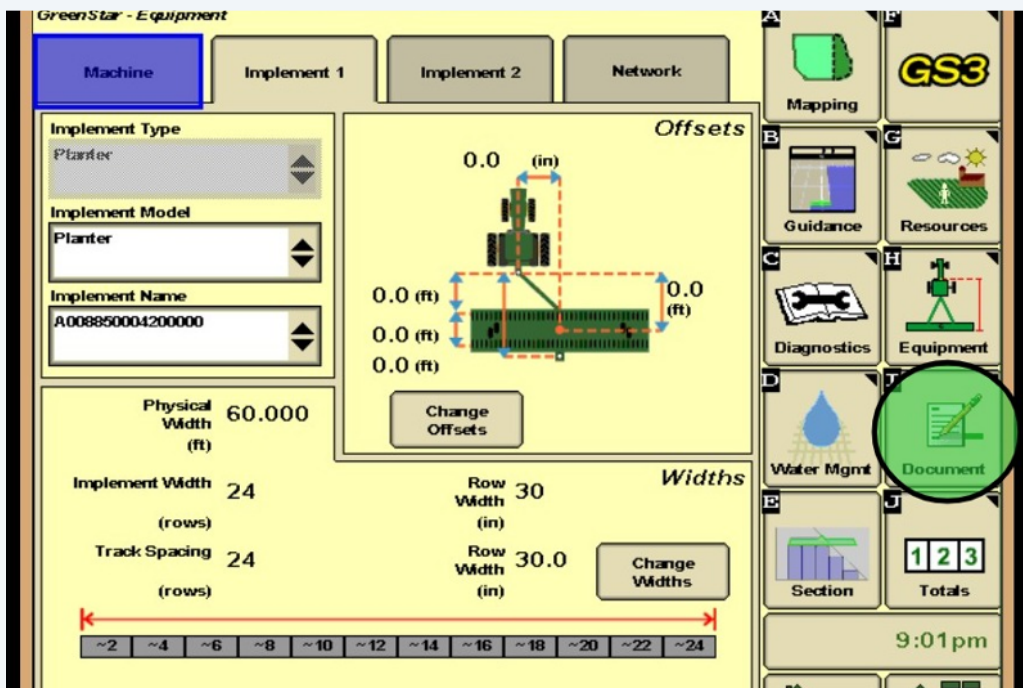


- 12 Verify correct width(s) and correct offset(s) are entered



## Documentation

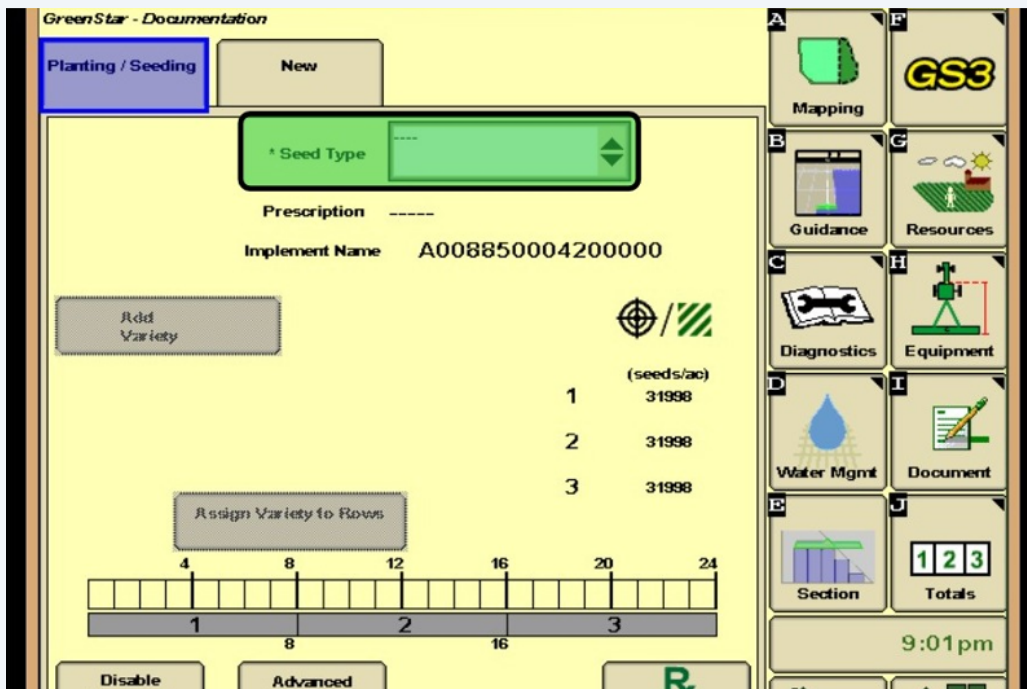
- 13 Once Equipment has all been selected and confirmed to be correct, select "Document" tab on the right hand side of the screen



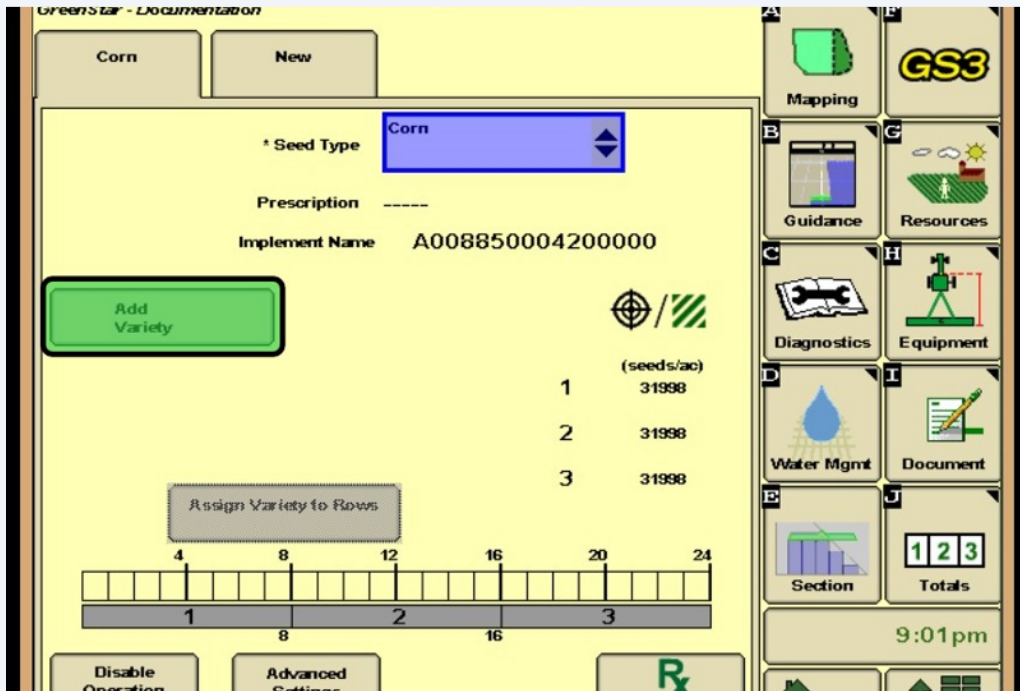
**i** Tip! In the Documentation tab, the tabs at the top of the screen should reflect the operation(s) being done. Ex. If the customer is planting, there should only be a "Planting/Seeding" tab and a "New" tab. If they are harvesting, there should only be a "Harvest" and a "New" tab.

**i** The exception to the tip above is if the Operator is doing two operations at once ie. planting and applying starter fertilizer. In this example, there would be a "Planting/Seeding" tab as well as a "Product Application" tab.

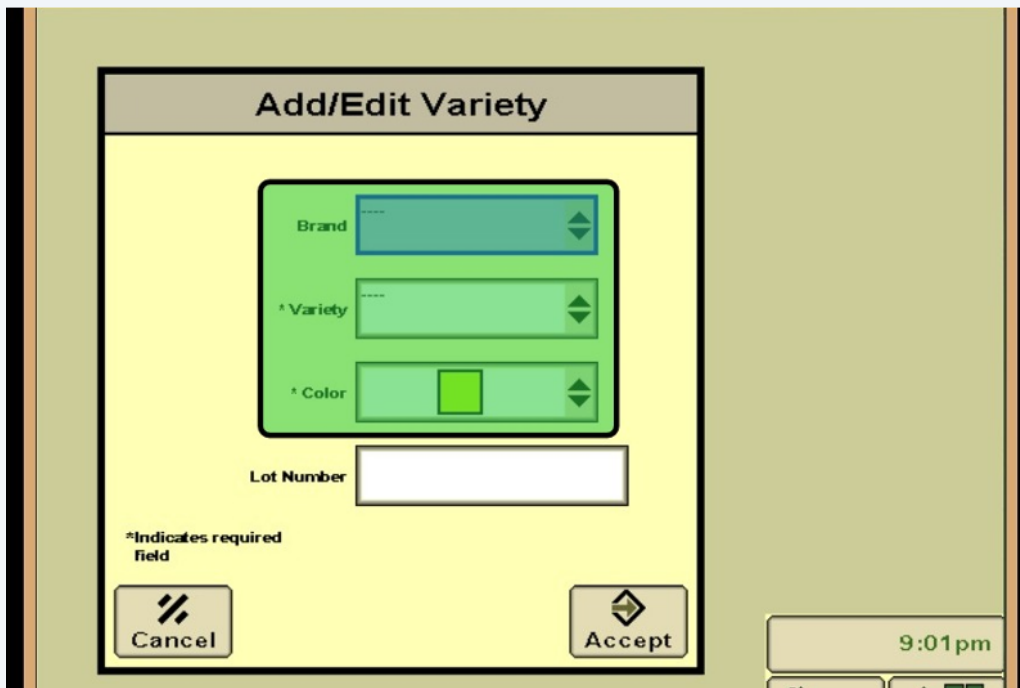
**14** Select a "Seed Type" from the drop-down menu. Also known as "Crop Type"



15 Select "Add Variety"



16 Select a Brand, Variety, and Color from the drop-down menus

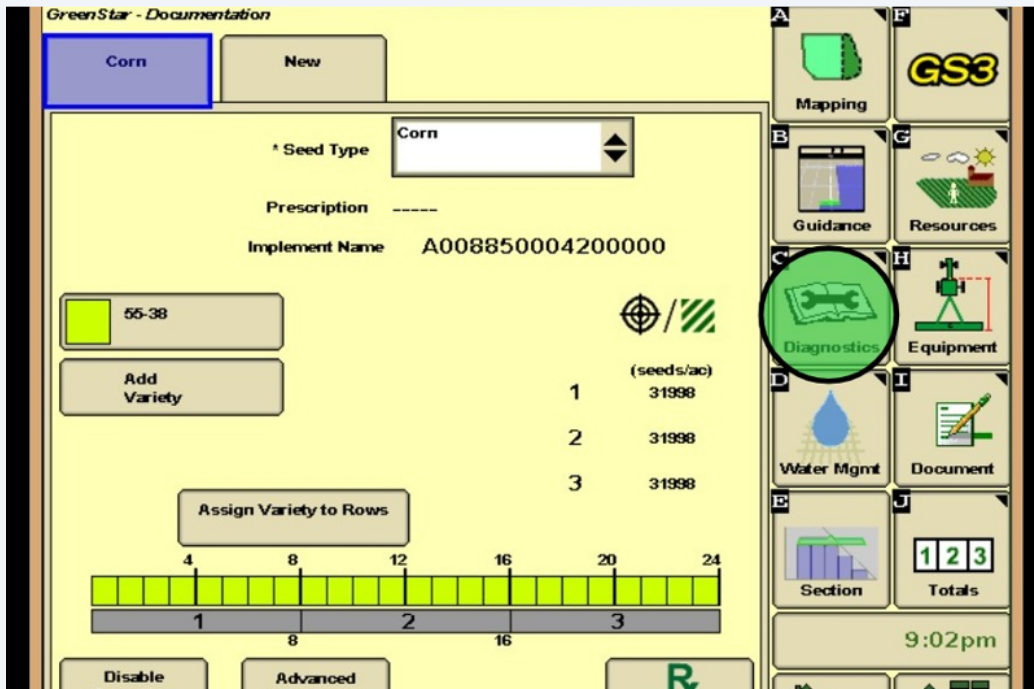


## Troubleshooting

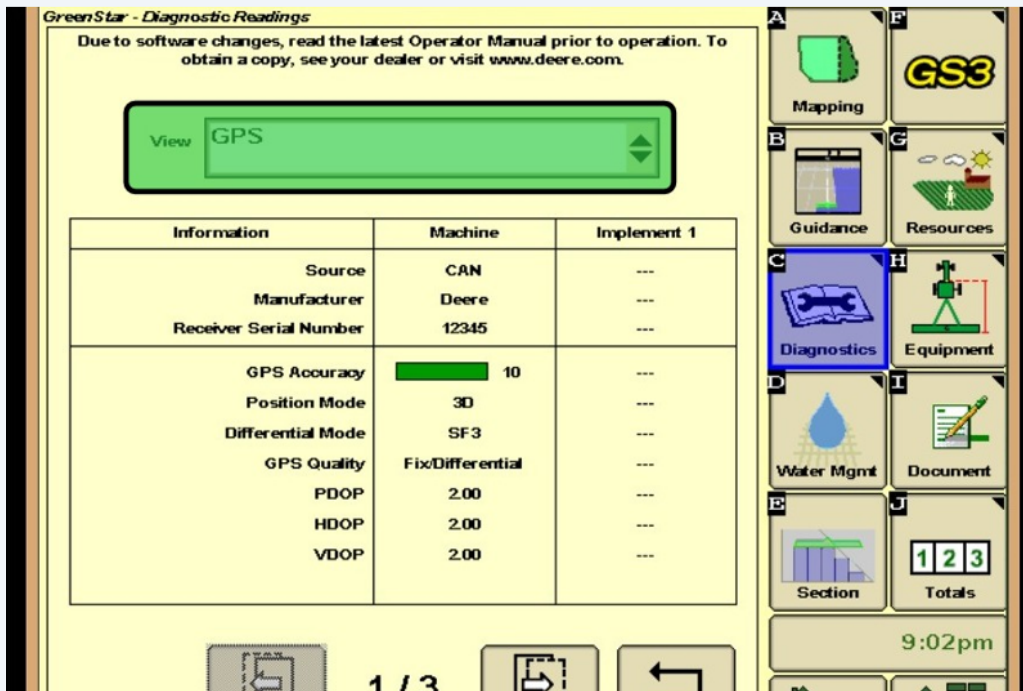


Tip! The following steps show how to diagnose what may be incorrect/missing that is keeping the GS3 2630 from "painting"

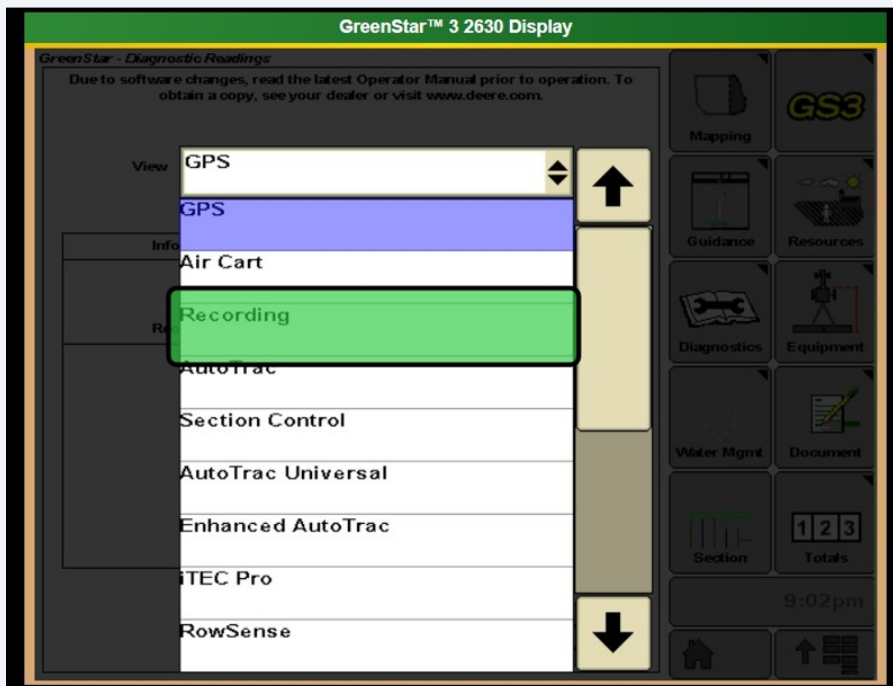
17 Go into the Menu > GS3 GreenStar > Diagnostics



18 Select the drop-down



19 Select "Recording"



20

The "Recording" selection will show which element of recording is incorrect or missing

